

Club Car DS 6 & 8" Long Travel Instructions



Proudly made in the U.S.A.

GOLF CART LIFT KITS & CUSTOM ACCESSORIES

ALLSPORTS

MANUFACTURING • INC

Step 1: Remove entire existing front suspension from cart.



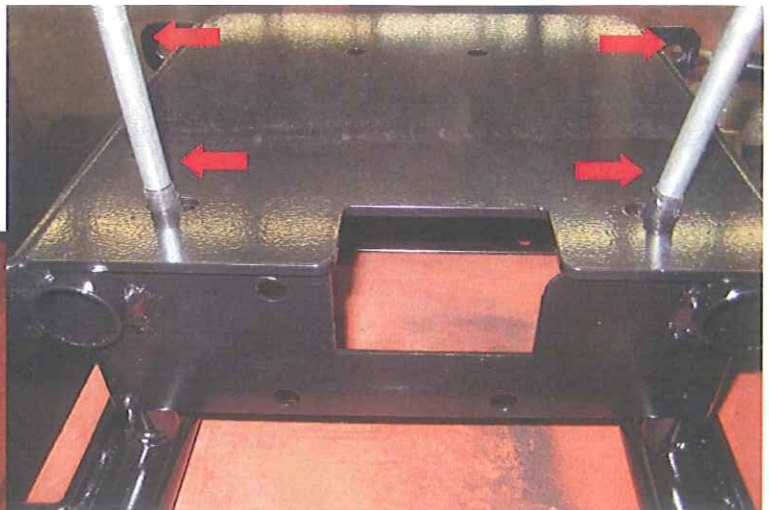
Step 2: Place Upper tower/Shock Mount plate on top of frame rails, over existing holes.



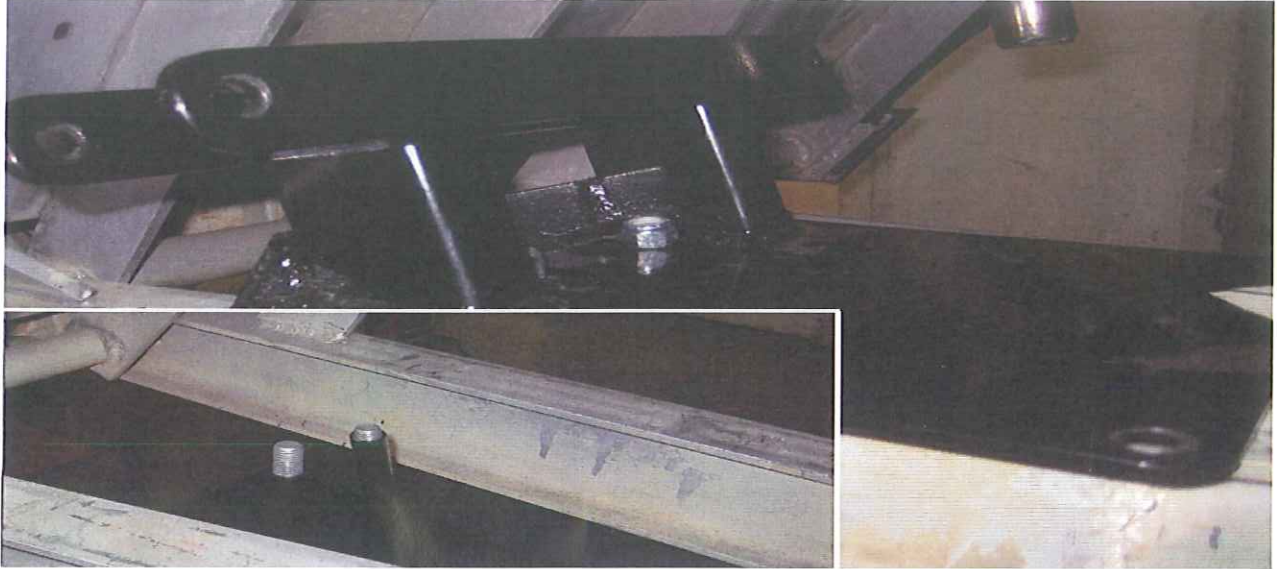
Step 3: Place already assembled carrier on jack or blocks under frame rails, line up with existing holes.



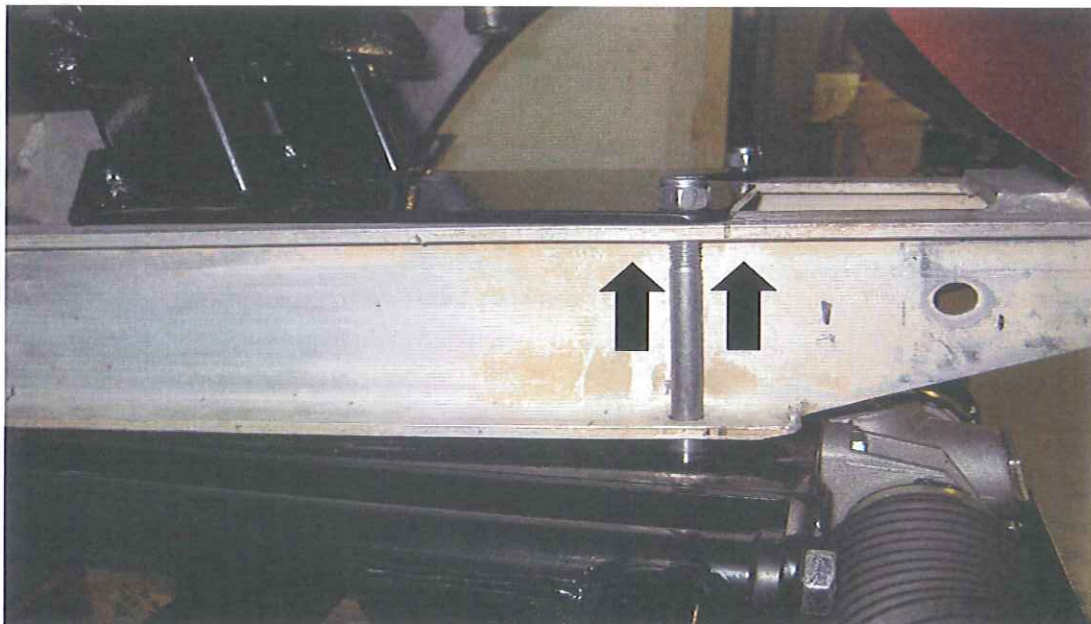
Step 4: Take two 3/8 x 4 1/4" bolts and wrap the top ends in tape. Just enough to hold the bolts in place when in the carrier holes. Next Place the two bolts in corresponding holes closest to you.



Step 5: Place two 3/8 x 4 1/4" bolts through the carrier, place two spacers over bolts. Next push bolts through the tower plate on top of frame rails and place 3/8 Nylock on end.



Step 6: Line up front carrier bolts (Step 4) with existing frame rail and tower plate holes. (Tape not shown in picture.) Place 3/8 Nylock on end and tighten all four nuts tower plate.



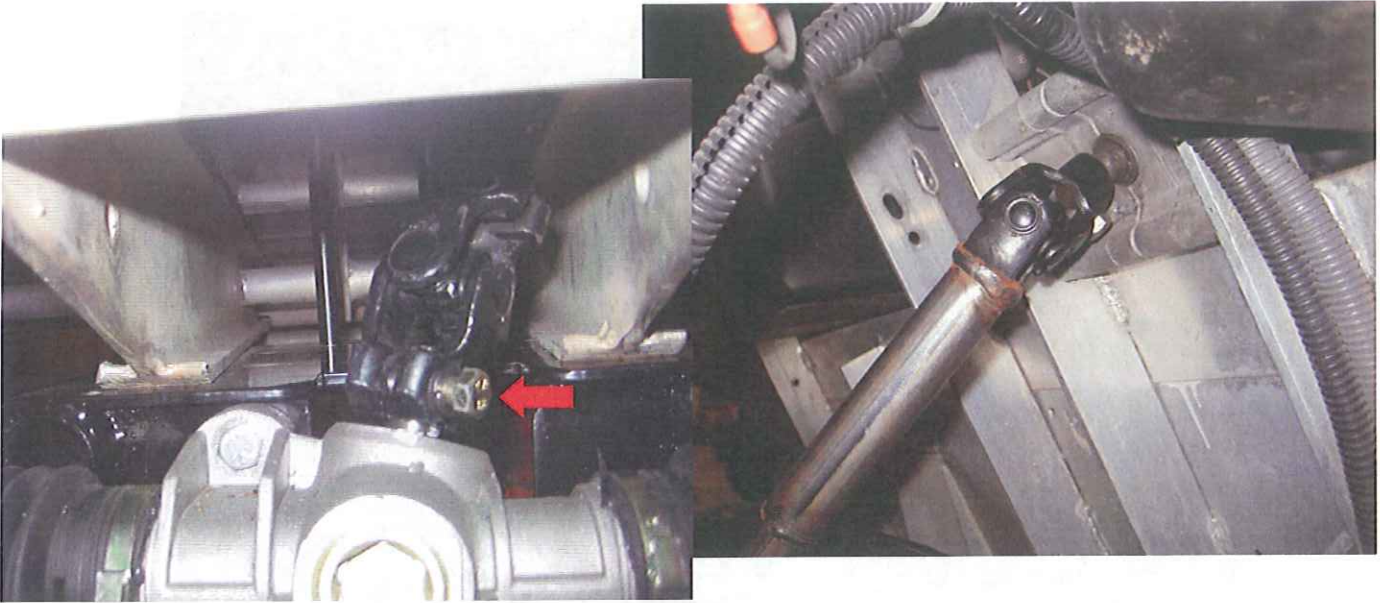
Step 7: Insert tie rods into corresponding spindle arm and place 7/16" nylock on bottom side. Repeat this step for both sides.



Step 8: Place OEM hub over spindle and tighten down. Repeat this step for both sides.



Step 9: Place new steering shaft on the end of existing steering column. Next attach opposite end to steering rack on the carrier. Tighten both bolts.



Step 10: Attach new shocks starting with lower arm on the carrier, make sure to use spacers indicated with red arrows. Next do the same, but to the tower plate using indicated spacers. Repeat this step for opposite side.

