



## Precedent All Sports Seat Kit Installation Instructions

## PRECEDENT ALL SPORTS SEAT KIT

### Front Brackets:

8MM X 1" (4)  
5/16 Flatwasher (4)

### Rear Support & Step Bracket:

5/16 X 1" (2)  
5/16 X 1 1/2" (2)  
5/16 Flatwasher (8)  
5/16 Nyloc (4)

### Main Frame:

5/16 X 1" (4)  
5/16 Washer (8)  
5/16 Nyloc (4)

### Step:

5/16 X 2 1/2" (2)  
5/16 X 2" (2)  
5/16 Flatwasher (8)  
5/16 Nyloc (4)

### Side Rails:

5/16 X 1 1/2" (4)  
5/16 Flatwasher (8)  
5/16 Nyloc (2)  
5/16 Acorn nuts (2)

### Front Hoop:

5/16 X 2 1/2" (4)  
5/16 Nyloc (4)  
5/16 Flatwasher (8)

### Top Supports:

1/4 X 1 3/4" (4)  
1/4 Nyloc (4)  
1/4 Flatwasher (8)

### Seat Back Brackets:

1/4 X 1 3/4" (4)  
1/4 Nylock (4)  
1/4 X 1" (4)  
1/4 Flat Washer (12)

### Bottom Cushion:

Truss Screws (8)

### Top Supports:

(2)

### Handstrap:

1 Handstrap



Step 1: Install seat frame brackets to cart deck with 8 MM X 25 MM bolts & washers (Fig.1)



Step 2: Install seat frame braces in bag well with 5/16" X 1 1/2" bolts, washers & nuts. Install step plate brackets to frame brackets with 5/16" x 1" bolts, washers & nuts (Fig.2)





Step 3: Install seat frame with 5/16" X 1" bolts, washers & nuts (Fig. 3)



Step 4: Install side rails with 5/16" X 1 1/2" bolts, washers & nuts (Fig.4) Note: Rear bolts use acorn nuts



Step 5: Install seat back frame with 5/16" X 2 1/2" bolts, washers, & nuts (Fig. 5)



Step 6: Install step plate with 5/16" X 2" & 5/16" X 2 1/2" bolts, washers & nuts (Fig.6)

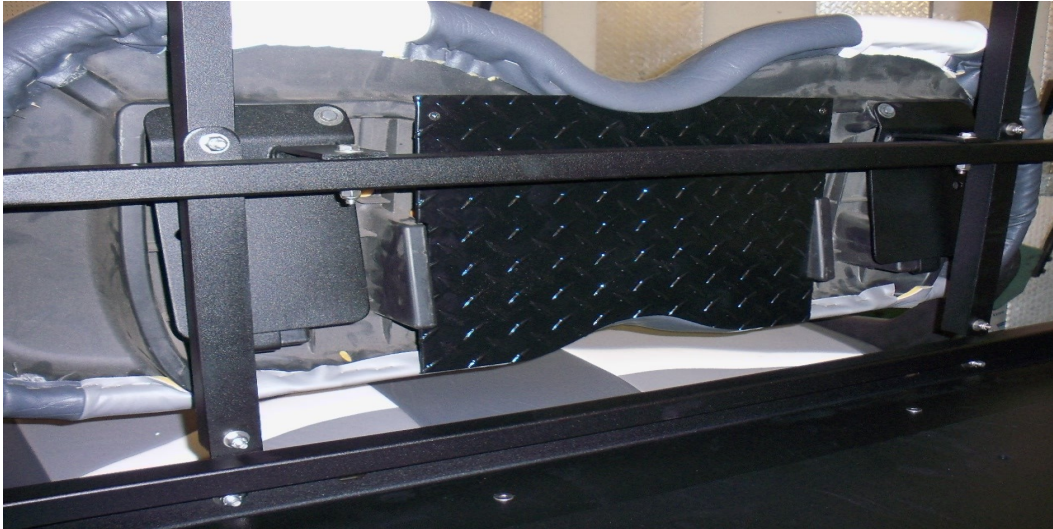




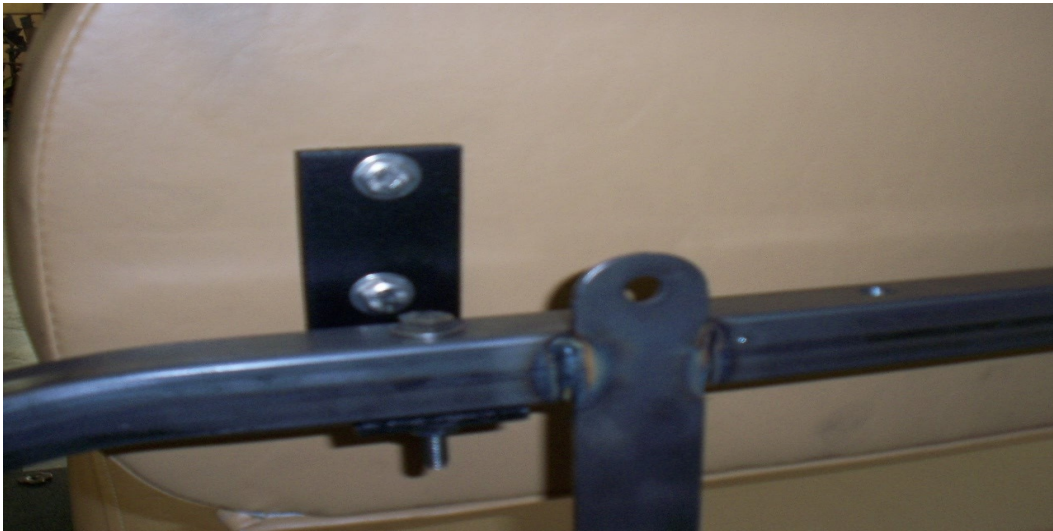
Step 7: Install top supports to seat back frame with 1/4" X 1 3/4" bolts, washers & nuts (Fig.7)



Step 8: Install front seat back brackets to seat back cushion with original bolts (Fig. 8)



Step 9: Install seat back cushions with 1/4" X 1 3/4" bolts, washers & nuts (Fig.9)



Step 10: Install front seat back brackets with 1/4" X 1" bolts & washers to seat back cushion. Install cushion to seat frame with 1/4" X 1 3/4" bolts, washers & nyloc nuts (Fig10)



Step 11: Install rear seat back to brackets with 1/4" X 1" bolts & washers. Install seat back to seat frame with 1/4" X 1 3/4" bolts, washers, & nyloc nuts (Fig 11)

ALL SPORTS MANUFACTURING  
3361 COPTER ROAD  
PENSACOLA FLORIDA 32514  
866-291-5244  
MADE IN AMERICA